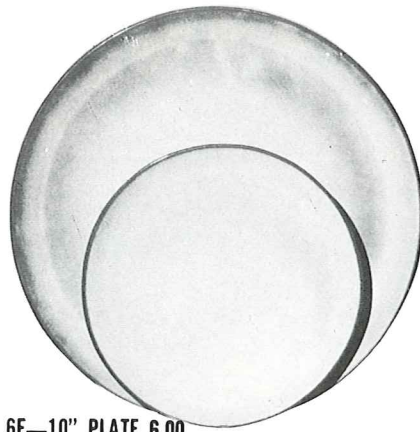


*4K—BUTTER DISH
6.50



6F—10" PLATE 6.00

6G—7" PLATE 3.50



*6B—SUGAR WITH LID
5.00

*6AB—CREAM & SUGAR SET
8.00

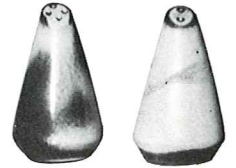


*6A—9 OZ. CREAMER
3.25



* *6C—CUP 3.25

6E—5" WELLED SAUCER 2.75



*6H—SALT & PEPPER
4.75



*6U—18 OZ. BAKER FOR TWO
A COVERED CANDY DISH 6.50



*6VS—1 1/2 QT. BAKER 9.25
6VS/W BAKER & WARMER SET 16.50



*5LC—6 OZ. JUICE 3.25



*5L—12 OZ.
TUMBLER
3.75



*81—1 QT. PITCHER 6.50



249 TACO HOLDER
BOXED 2 PER BOX 10.00
Not Available in Flame



*6V—2 1/2 QT. BAKER 13.25
6V/W BAKER & WARMER SET 20.50



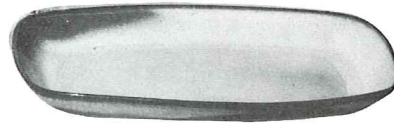
*6T—6 CUP TEAPOT 9.25



*80—2 QT. PITCHER 9.25



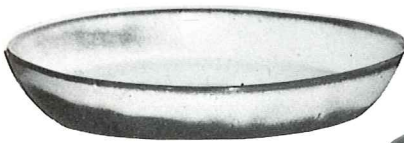
*6J—2 CUP TEAPOT
6.50



5QS—13" STEAK PLATE (SHALLOW PLATTER) 5.00

*6P—11" STEAK PLATE 4.50

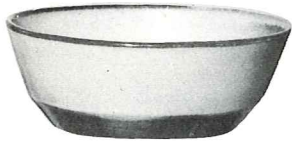
*5PS—9" TRAY 3.75



*91—10" BAKING DISH
4.75



*XO—3 OZ.
SINGLE SERVING
BOWL 1.50

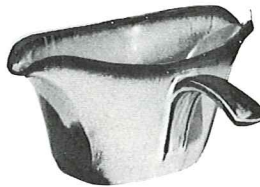


*6N—1 QT. BOWL
4.75



* *6X—14 OZ. CHILI SOUP 3.25

* *6XS—10 OZ. FRUIT 2.75



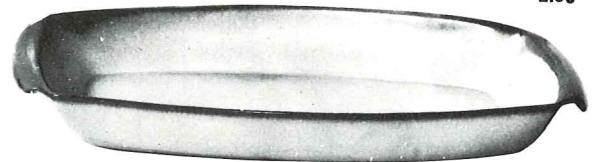
*6S—2 SPOUT GRAVY
6.50



*242
2.50 CORN DISH

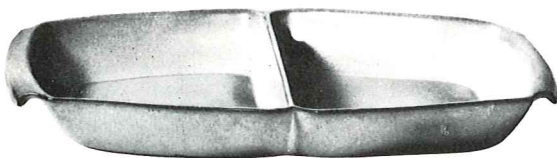


*243—6 1/2" CRESCENT SALAD
2.50



17.50
5P—17" DEEP PLATTER

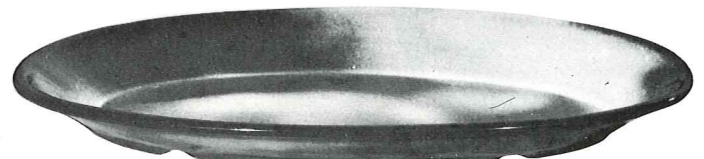
7.75
*5Q—13" DEEP PLATTER



*5QD—13" DIVIDED BOWL
7.75



*BP—6 OZ. BEAN POT
OR CUSTARD
2.75



*TP—17" OVAL PLATTER
17.50

THIS PAGE AVAILABLE IN PRAIRIE GREEN, ROBIN EGG BLUE, AUTUMN YELLOW AND WHITE SAND EXCEPT WHERE NOTED

* AVAILABLE IN 8 STANDARD COLORS — ADD 50% FOR FLAME

SIZES ARE APPROXIMATE AND MAY VARY SLIGHTLY.

* * AVAILABLE IN BLACK & FLAME ALSO.